



INDUSTRIAL DRYERS

by

SARGENT

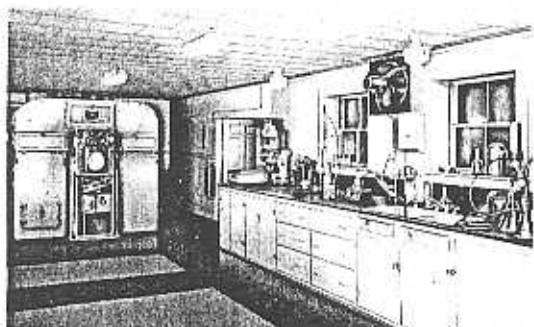
Designed and manufactured for all industry
wherever there's a drying process

SINCE



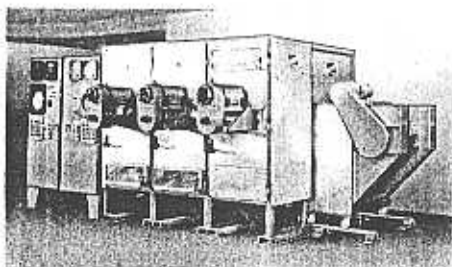
1852

RESEARCH Comes First



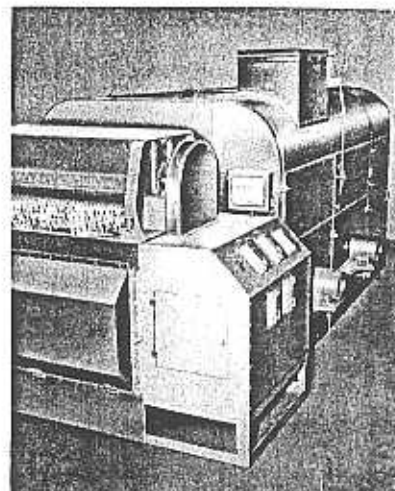
SARGENT'S DRYING RESEARCH LABORATORY

Sargent's Drying Research Laboratory will tackle any drying problem you have. It is staffed by men highly qualified by training and experience to come up with an exact, practical, production-cost-conscious answer. Together with Sargent engineers, these men will serve, advise, recommend or design special drying equipment for your particular products, your particular process. Here is an invaluable source of broad experience and knowledge to serve you and your industry. Send us your problems. The more difficult they are, the better we like them.



SARGENT R & D DRYER

A new basic concept for test-drying any product by any method, this single machine provides all processing methods of product testing including drying, cooling, moistening, curing, baking, etc. A full selection of air-flow patterns and techniques is available. The basic module is a complete all-methods product-testing unit. A retractable modular carriage holds method-test components and materials handling equipment such as apron or vibratory conveyors, trays, trucks, or other conveying or holding equipment. Modules easily interlock with each other.



SARGENT PILOT PLANT DRYER

Two drying, one cooling section and Sargent's 4-foot single hopper extruder are combined in this compact, highly efficient and versatile research or pilot plant dryer. Stainless steel extruder has chrome-plated grid and paddles, is used for a great variety of products. Total power requirement is 3 1/2 H.P. Uses, as do all Sargent dryers, well under 1 1/2 lbs. of steam per pound of moisture removed from product. Shipped completely assembled.

**SARGENT Machines Are
Pre-Assembled
for
Record-Quick Installations
At Lowest Costs**

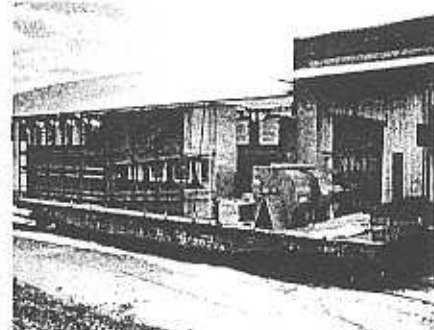
Sargent Dryers are installed and in operation faster than any other dryers on the market. For example, the large synthetic rubber dryer shown back of this page, upper right, was installed in less than four weeks. Years ago, Sargent pioneered its famous pre-assembly method, with consequent saving of installation costs. Sargent ships smaller dryers completely assembled, needing only service connections at the customer's plant. Larger dryers, after assembly at our plant are separated into shipping size units — size of units being limited only by handling capacity at the customer's plant.

On Flat Cars At Our Railway Siding

A completely assembled pilot plant rubber dryer (with crated motors inside), ready for weather cover and shipment

Some completely assembled fan sections of large tobacco dryer with complementary assembled framework, being readied for shipment.

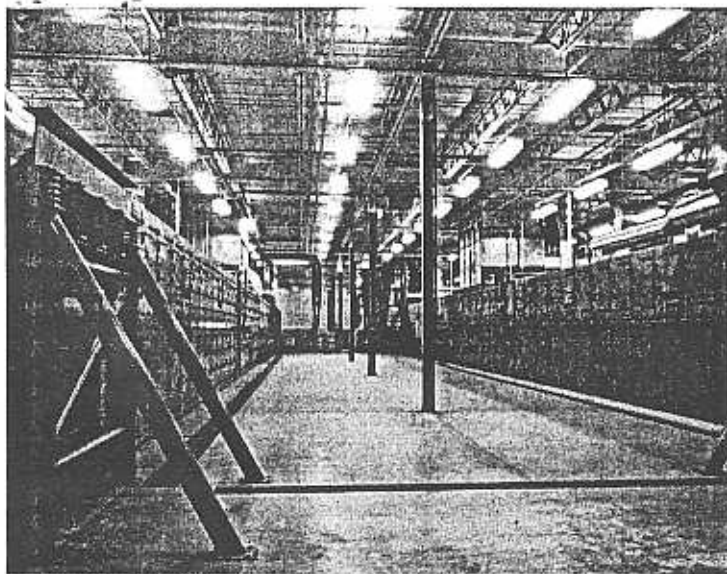
A corner of one of our fabrication plants with banks of dryers being pre-assembled.



C. G. SARGENT'S SONS CORPORATION

Graniteville, SINCE 1852 Massachusetts

NEW YORK • PHILADELPHIA • CHICAGO • LOS ANGELES • SEATTLE • HOUSTON
ST. LOUIS • DETROIT • CINCINNATI • CHARLOTTE • ATLANTA • TORONTO



TOBACCO DRYERS — Strip, stem, chopped tobacco film, dipped filler and other tobacco dryers by Sargent are completely dependable high quality production machines. Designed for careful handling of all types of tobacco; and for uniform drying. Together with Sargent feeders, coolers, and ordering machines (with Sargent's patented Sarjet ordering heads and Sargent's patented straddle pans) they have raised tobacco processing standards for quality and economy to a new high.

SARGENT **IND**

WHEREVER there's a drying process, there's a SARGENT to do the job — to bring you new high standards of uniform drying, product quality and real production economy. The broad practical experience that comes of years of research in drying methods and of designing and building machines for ever more effective product drying, saves you time and money on your dryers, when you select SARGENT.

Unusually rugged, Sargent Dryers take continuous volume production with little operator attention. Sargent's exclusive "free access" design assures ease and speed of clean-out — the fan side of a dryer is covered with easily removable panels, and the non-fan side with full height, hinged door panels. Conveyors may be slat, rod, perforated steel or mesh. Heat source may be gas, oil, steam or electricity. Additional sections, pre-assembled at Sargent plants, may be added easily and quickly at any time, with minimum interruption of production.

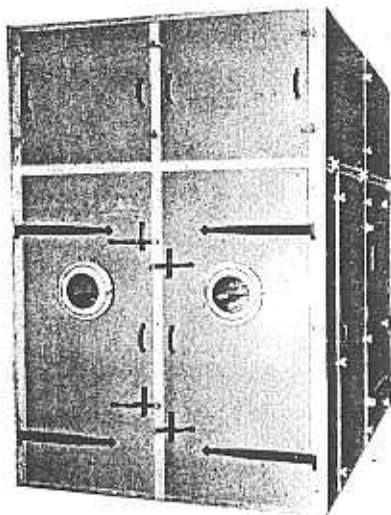
Sargent has pioneered in many fields; the first gas-fired rubber dryer was a Sargent. The first flashless powder was dried in a Sargent. New man-made textiles and innumerable other products have come to the market dried by special-design Sargents. Each dryer is designed and built to the exact needs of product and of production. From small table and lab models, from tray and truck dryers, to huge, high capacity 3-decker, multi-section conveyor dryers, each is designed to serve profitably and well for many years to come.

Operating economy is standard with a Sargent. For many products, "pound for pound" is the rule of thumb — less than a pound and a half of steam used to remove a pound of water. The product is uniformly dried throughout the entire bed to exact specified moisture content. Air may be up or down — usually on big dryers, a carefully calculated combination.

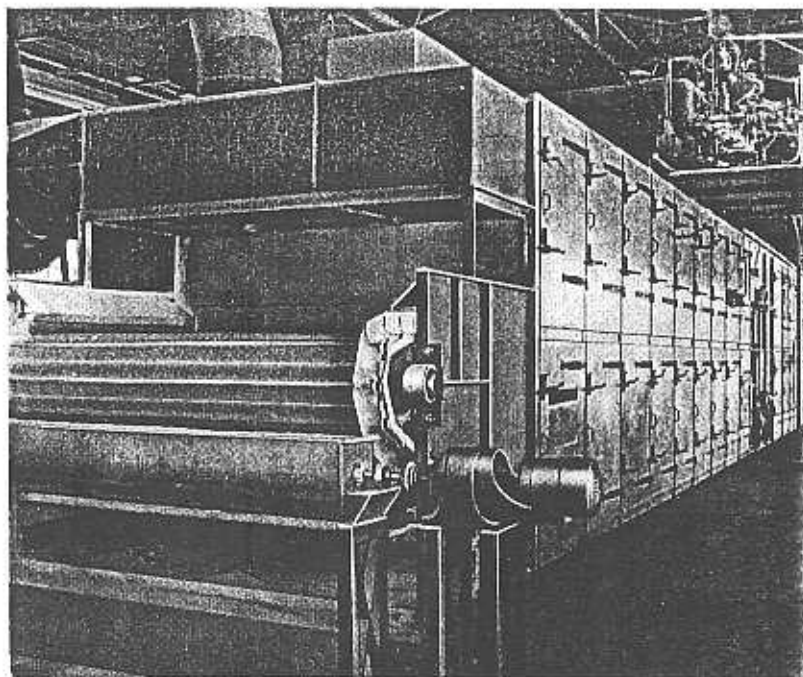
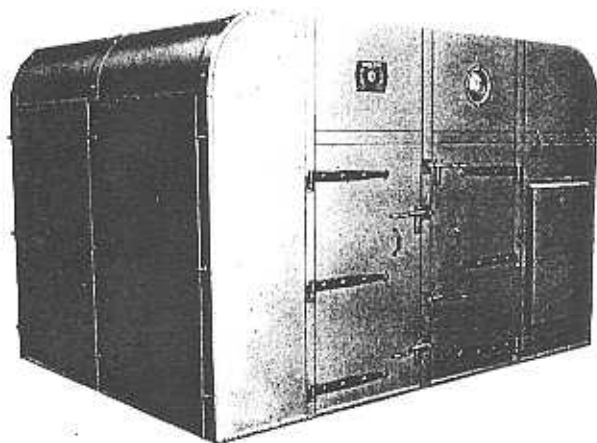
DRYERS (CONVEYOR, TRAY, TRUCK, TUNNEL, ROTARY, PILE)
FEEDS (OSCILLATING CONVEYOR, VIBRATING SCREEN, AND STANDARD)
COOLERS • EXTRUDERS • GRANULATORS

TRAY and TRUCK DRYERS

For safest, most efficient drying of wet-powdered, heat-sensitive or unstable materials. Small models for lab or pilot plant; many tray, multi-stacked, or sectional models for production. For chemicals, pharmaceuticals, batch drying of many products.



Two compartments, tray dryer, above. Truck dryer, below, of large capacity, with precisely uniform drying throughout the entire truck load.



SINGLE PASS DRYER WITH EXTRUDER — This 2-stage dryer, for Kaolin, is typical of Sargent creative engineering: 20 drying sections, 2 cooling sections, both up and down airflow. Four zones, each independently controlled. Great volume capacity — dries clay rods (from extruder mounted at the feed) from 37% entering moisture to 1% when leaving cooler. Note access doors, each section, for quick, easy cleanout. Uses both gas and oil for greatest economy in the particular area. Combination burners are mounted on top of dryer.